

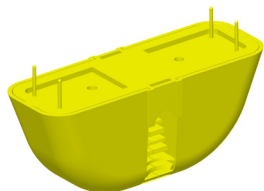
SAFE LIFT ANCHOR

NEW

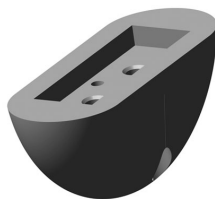
concrete accessories

CONAC SAFE LIFT ANCHOR

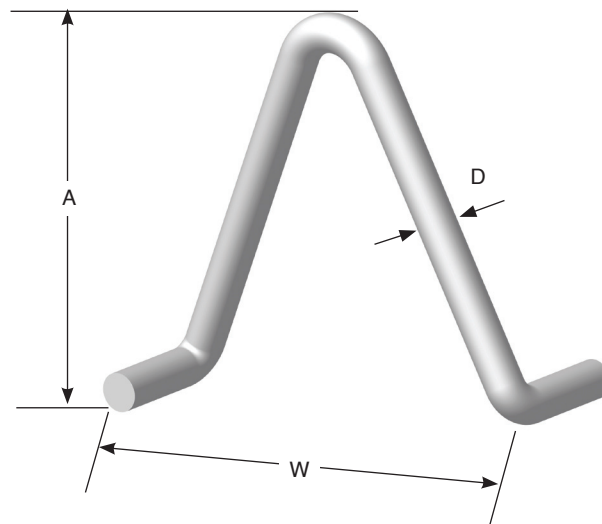
Designed for face-lifting solid panels or insulated panels with sufficient thickness of back wythe.



Plastic Recess Former
for TT-Anchor



Rubber Recess Former
for TT-Anchor



PRODUCT CODE	ANCHOR DEPTH (A)	ANCHOR WIDTH (W)	BODY DIAMETER (D)	PANEL DEPTH	SWL TENSION (LBS)	SWL SHEAR (LBS)
SF-ANCHOR 6T	7-3/4"	6-"	.70"	8"	10,000	13,000

Note: Safe working Load provides a factor of safety of approximately 4:1 based on a minimum concrete strength of 4,000 psi.

CONAC
Concrete Product Solutions

CALL US TOLL FREE
1-800-336-2598
www.conacweb.com